



Stampante 3D “SeraMaker”

Misure per lavorazioni

Per altri progetti visita



www.sebastianoserafini.it

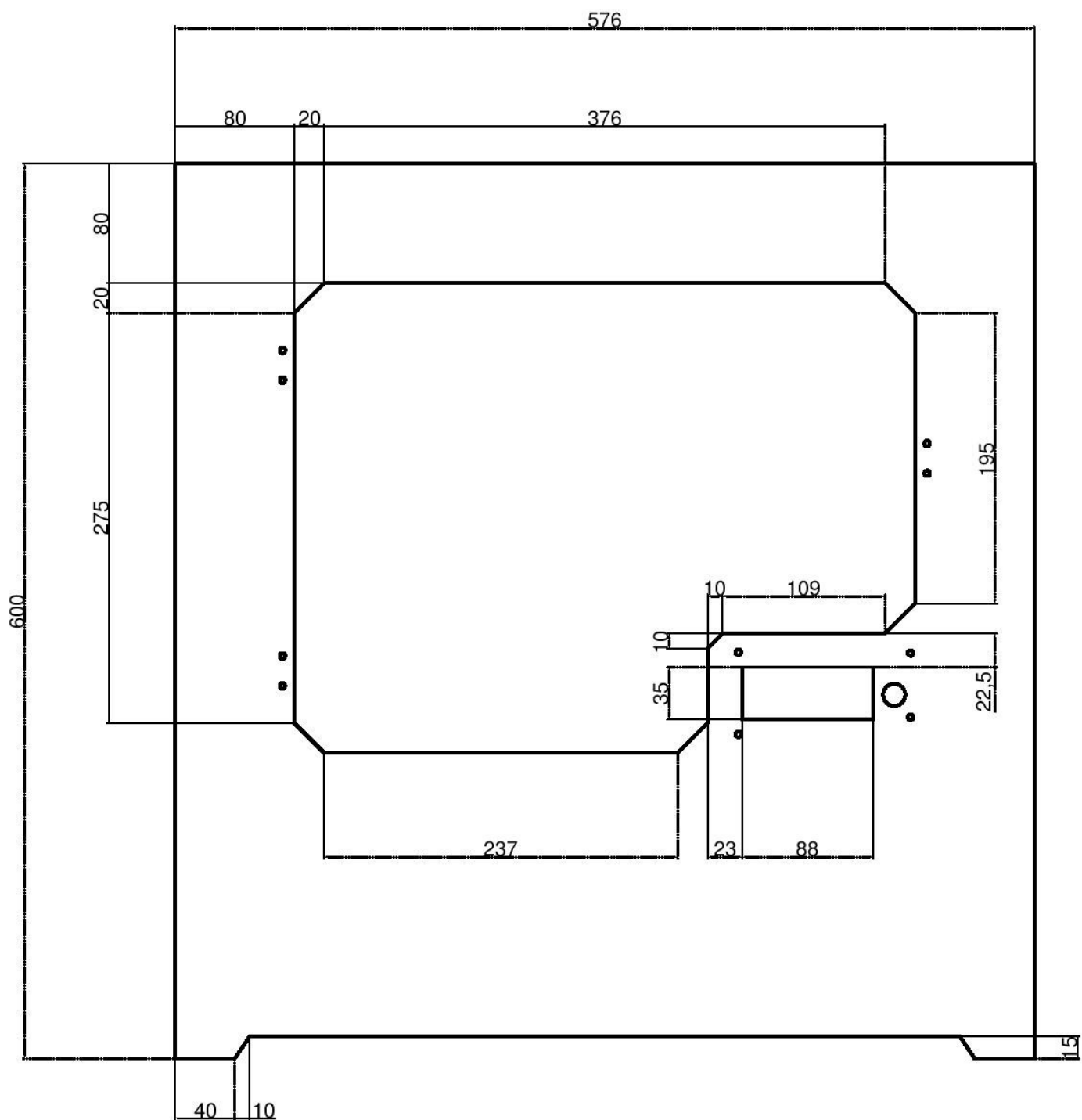


www.youtube.com/user/SebaSera94

FRONTE

QUOTE PER TAGLIO

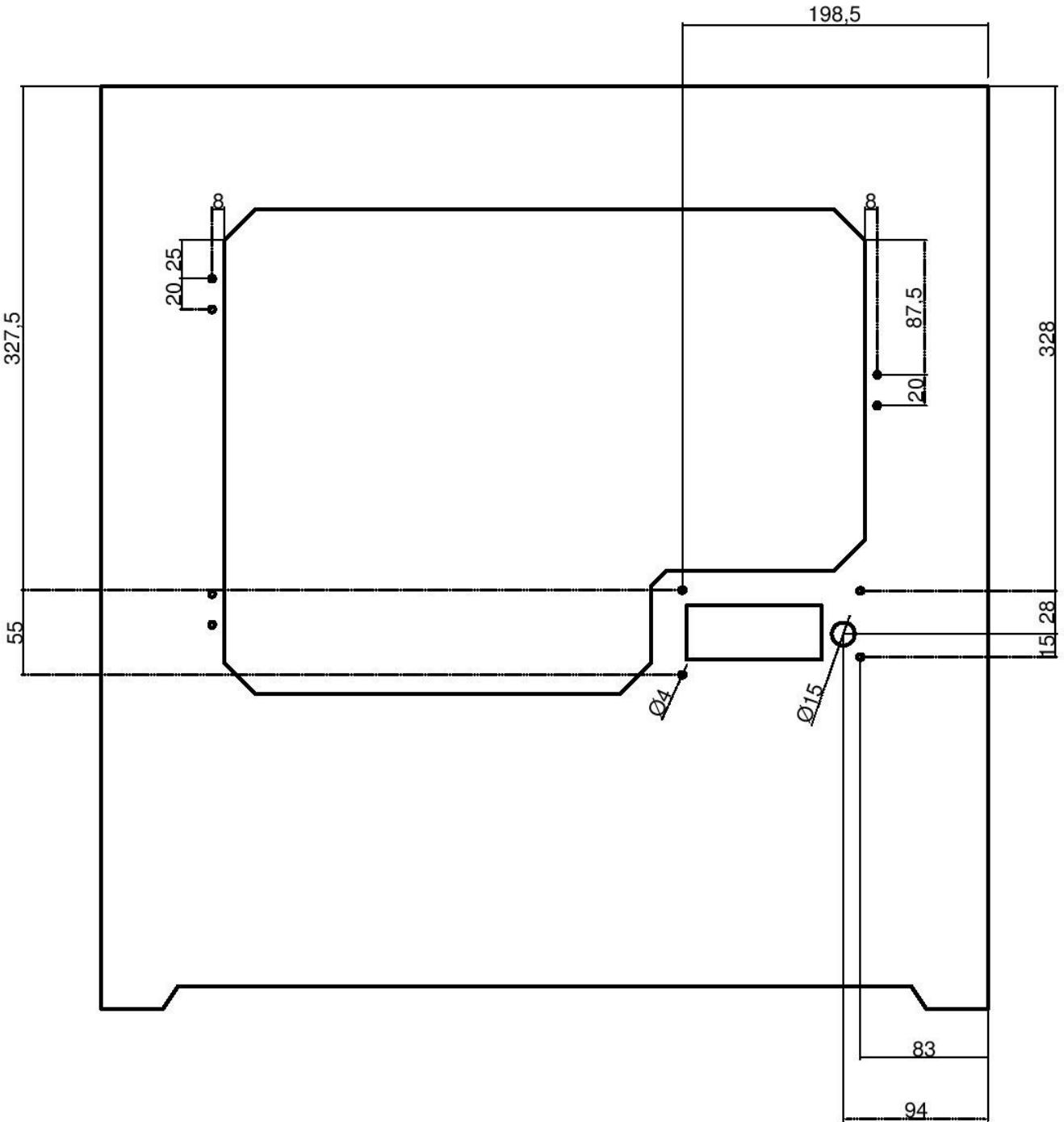
MDF 12mm



FRONTE

QUOTE PER FORATURA

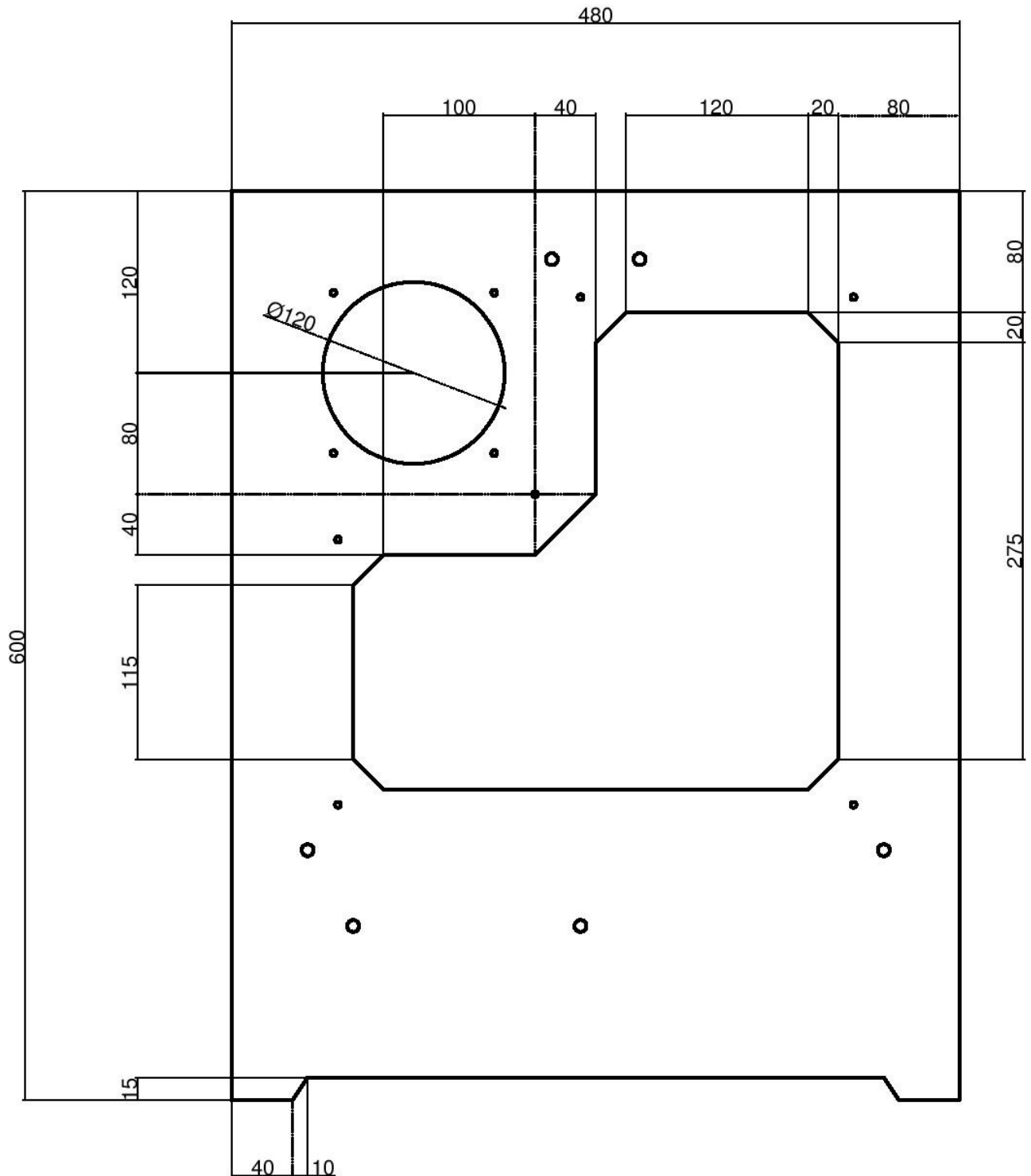
MDF 12mm



LATI (2x)

QUOTE PER TAGLIO

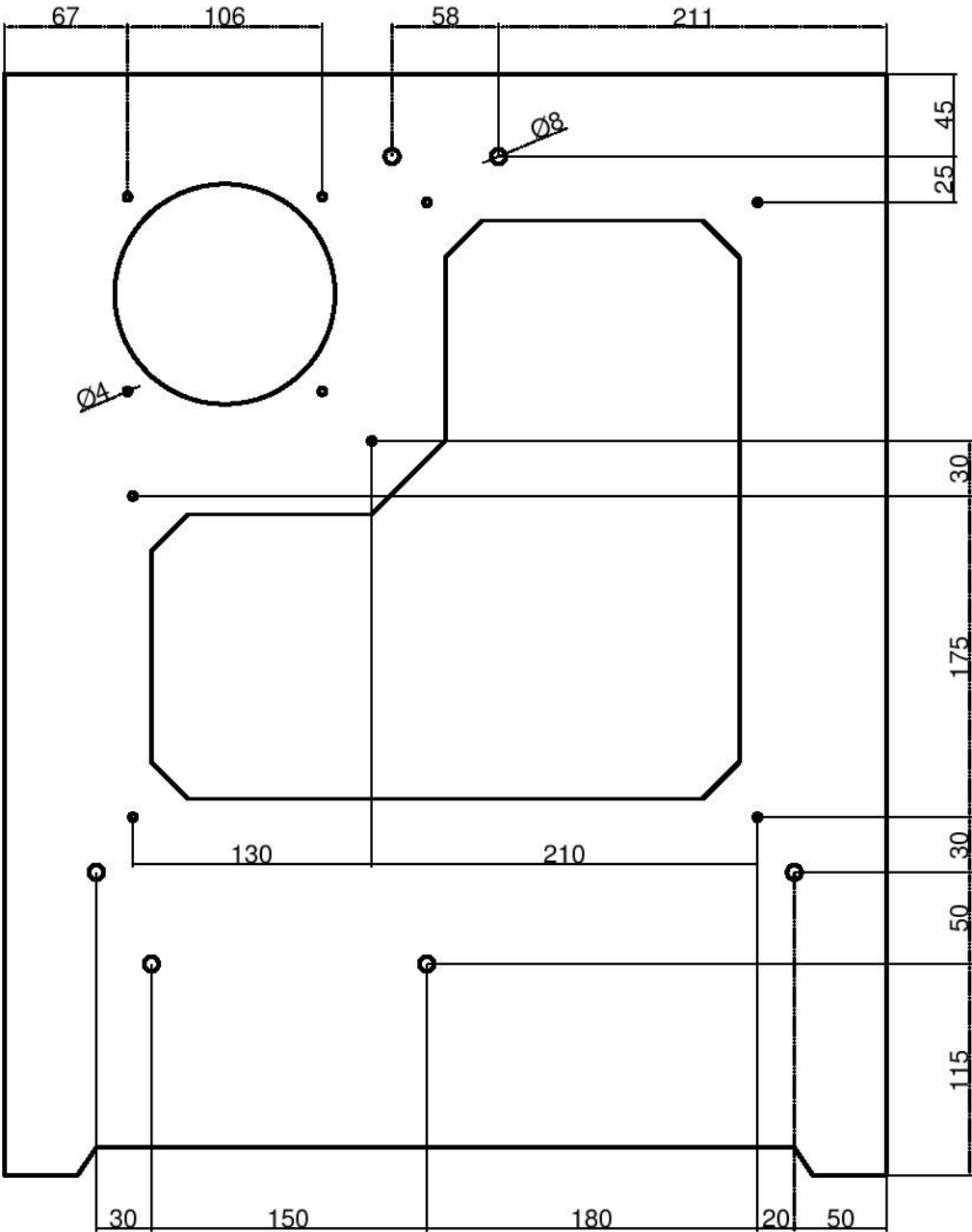
MDF 12mm



LATI (2x)

QUOTE PER FORATURA

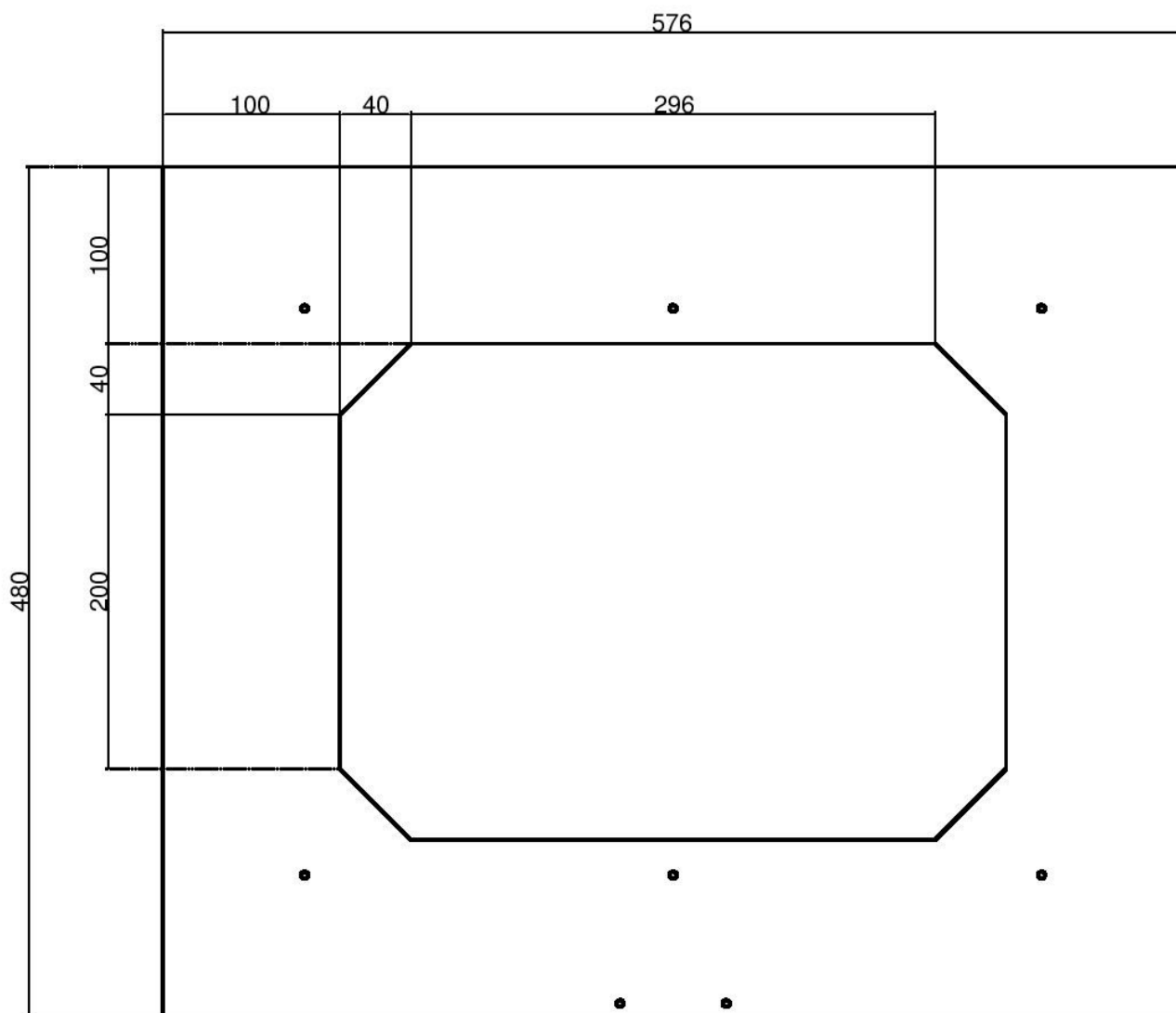
MDF 12mm



LATO SUPERIORE

QUOTE PER TAGLIO

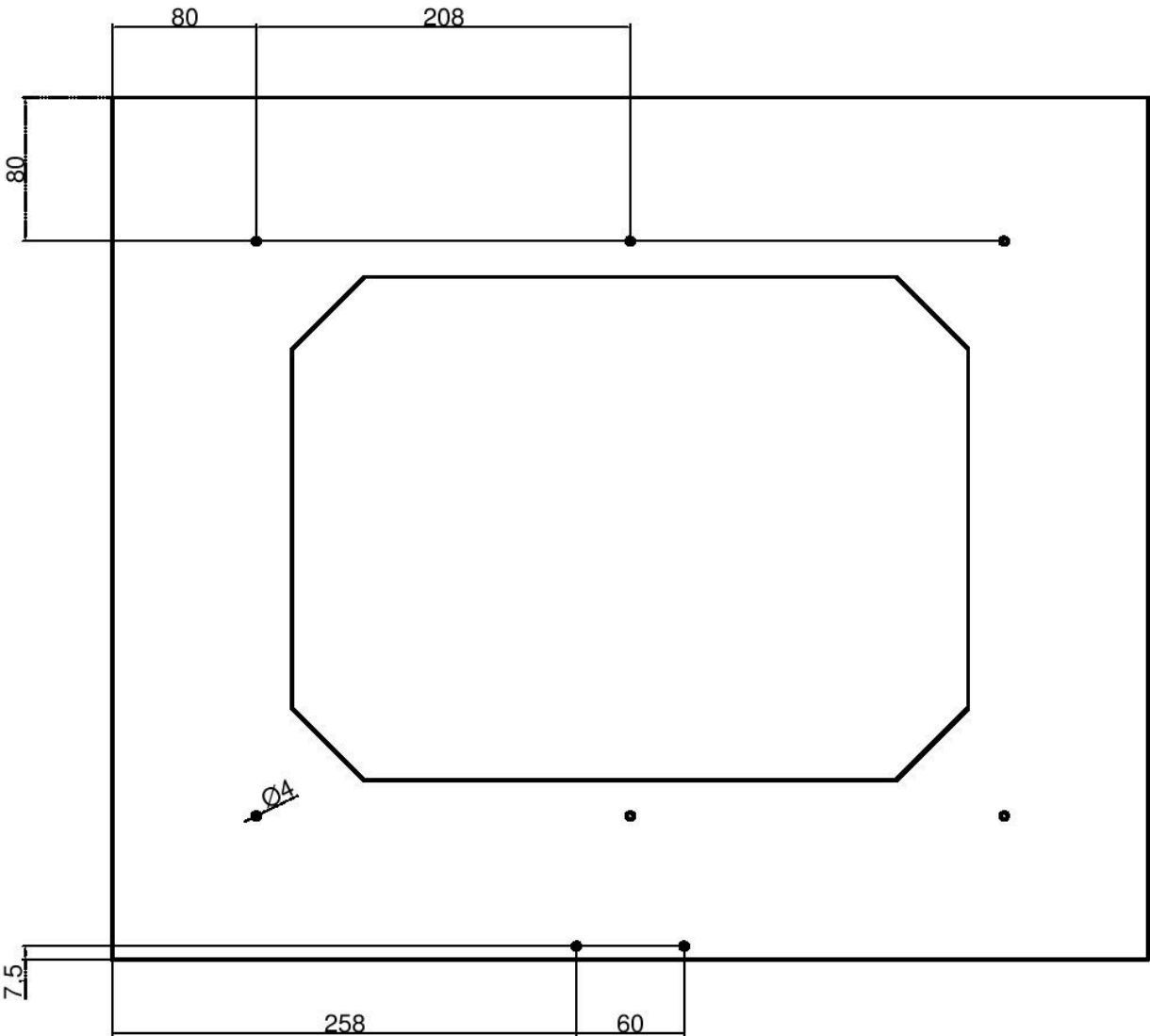
MDF 12mm



LATO SUPERIORE

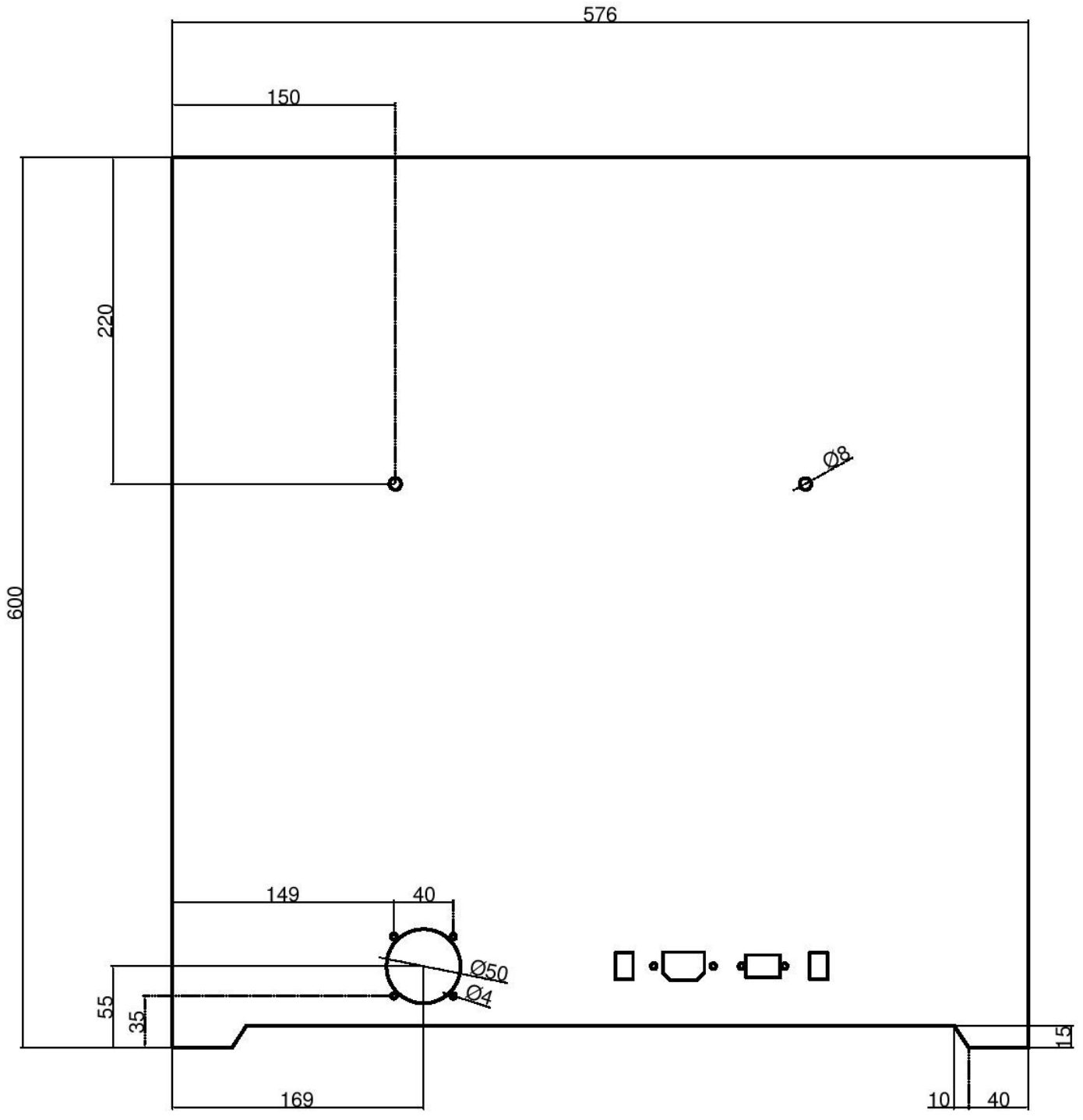
QUOTE PER FORATURA

MDF 12mm

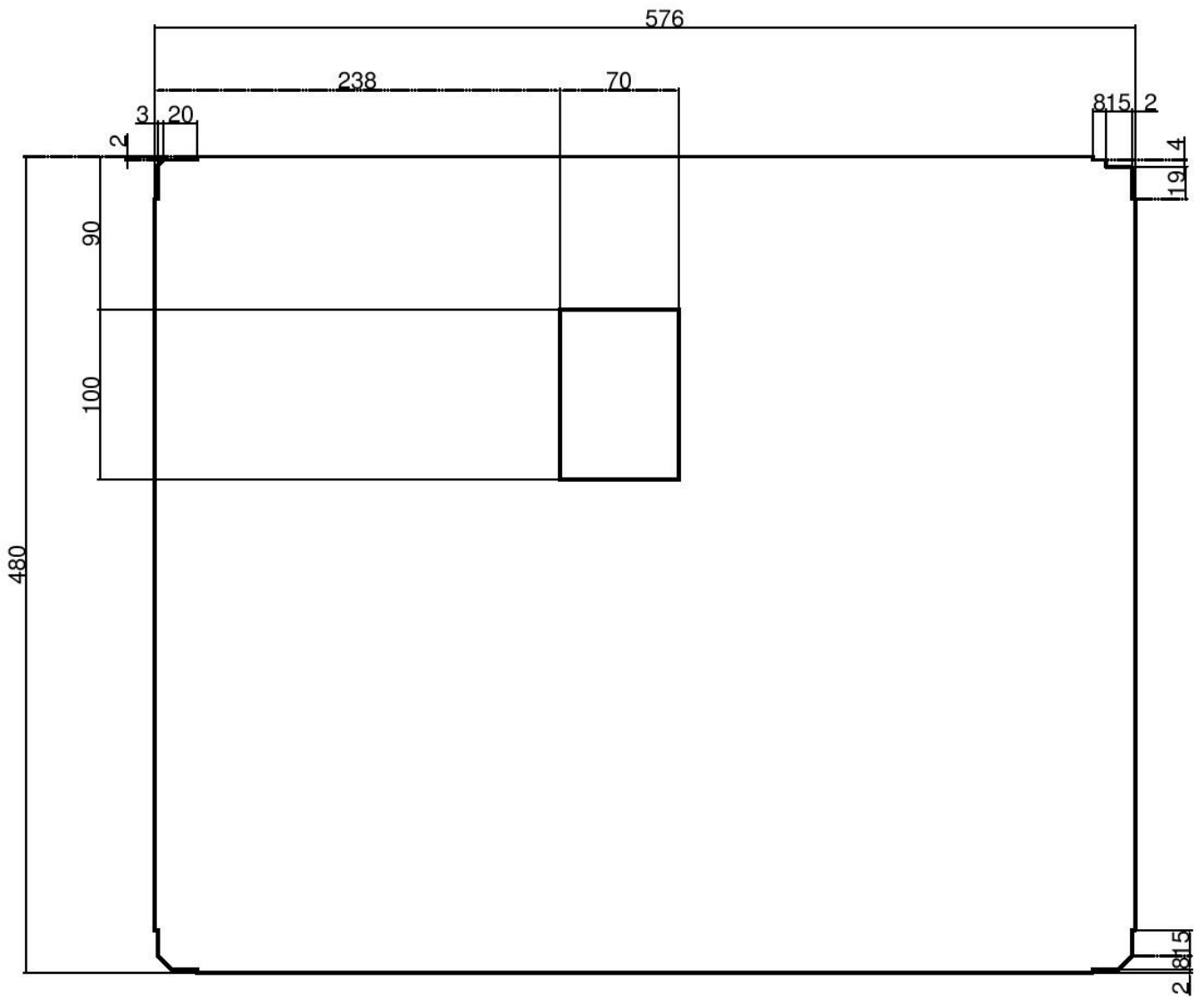


RETRO

MDF 12mm

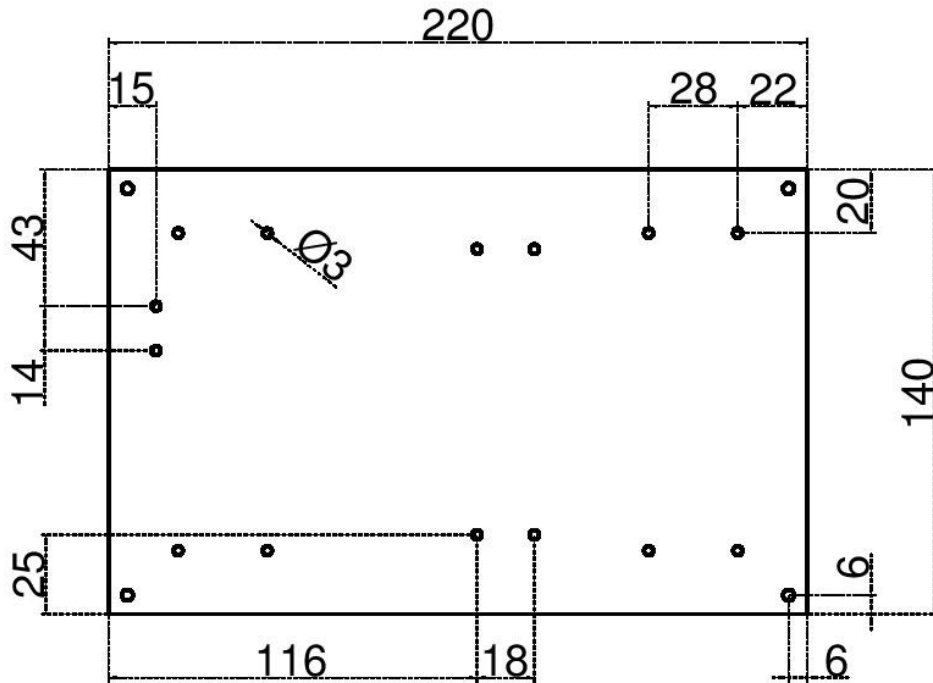


LATO INFERIORE (BOTTOM VIEW) MDF 6mm



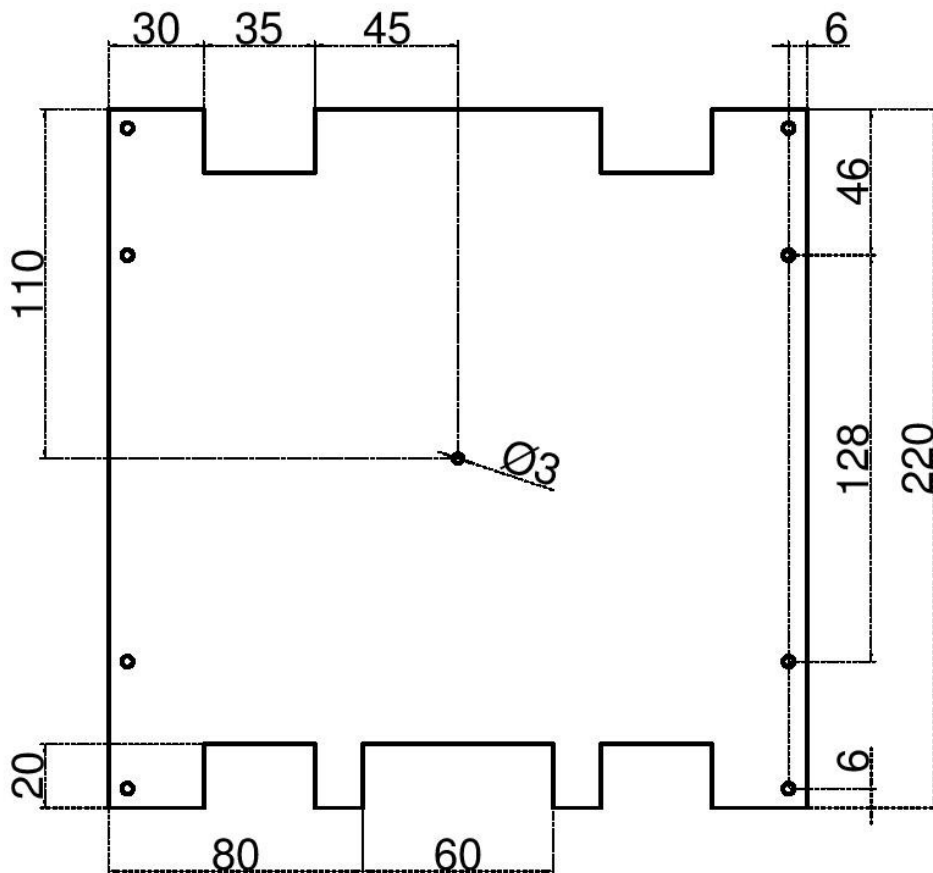
CARRELLO ASSE Y

MDF 4mm



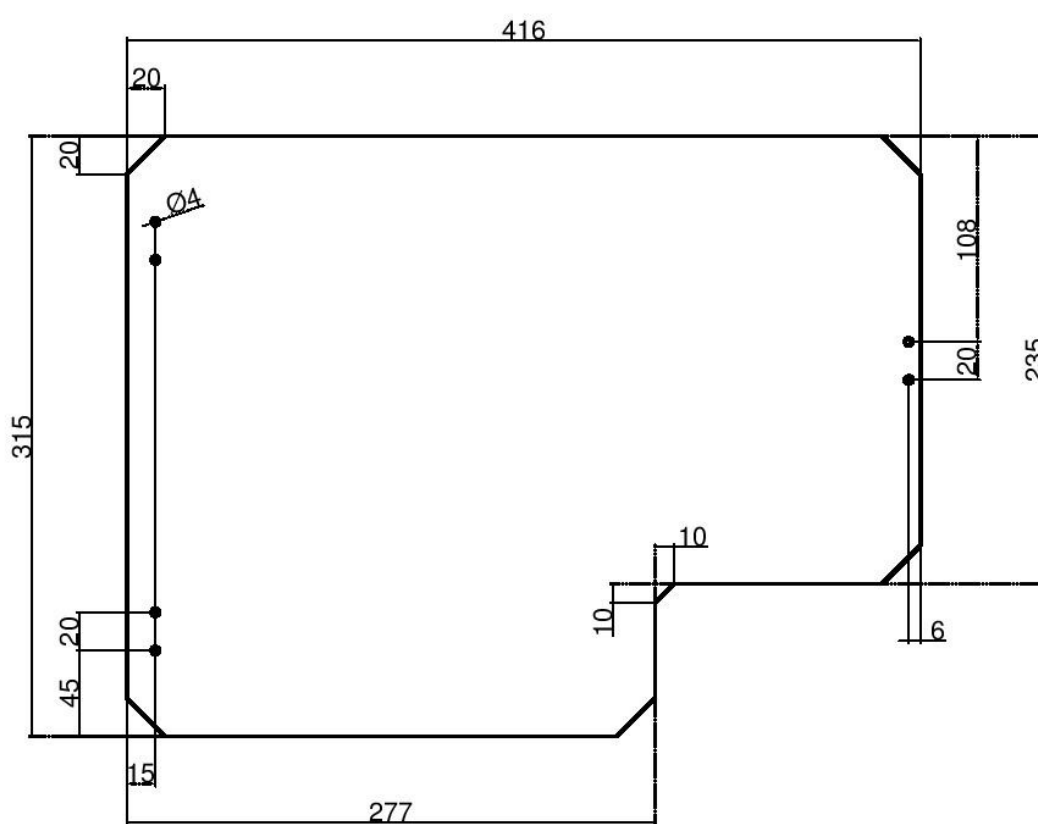
SUPPORTO PIANO DI STAMPA

MDF 12mm



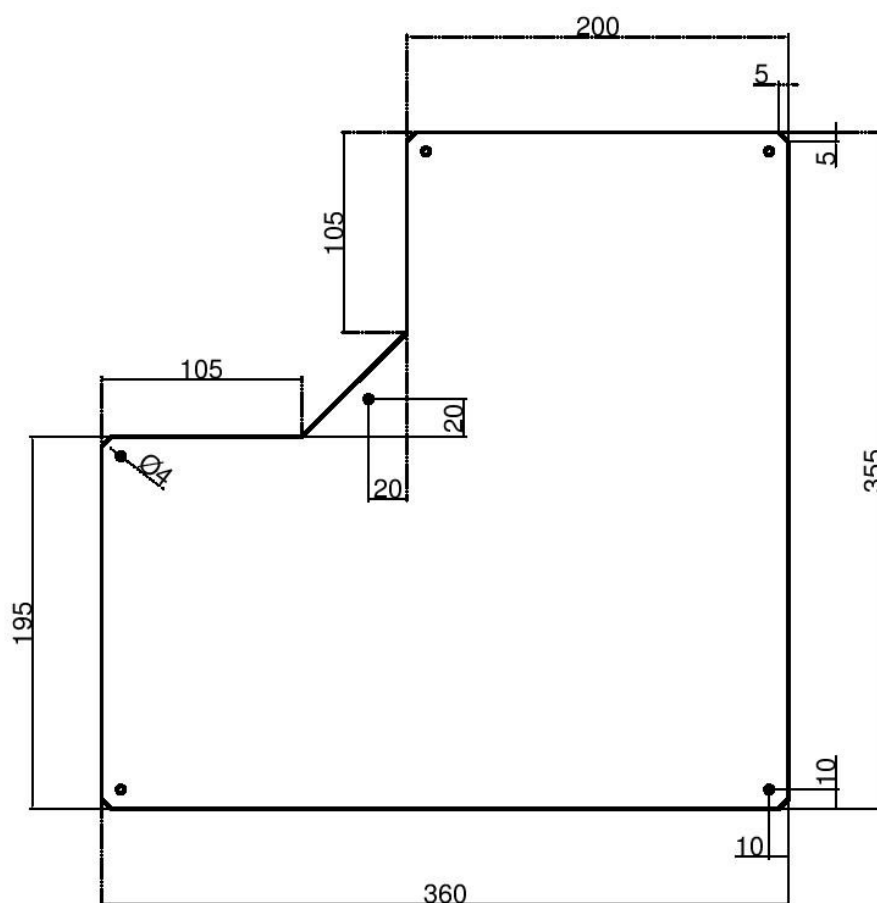
SPORTELLO FRONTALE

Vetro sintetico 4mm



FINESTRA LATERALE (2x)

Vetro sintetico 4mm



FINESTRA SUPERIORE

Vetro sintetico 4mm

